

# YOLO LAND TRUST

*Our Lands. Our Future.*

SPRING/SUMMER 2014

YOLO LAND TRUST

## Board of Directors

**Kathy Ward**  
*President*

**Kristen Bennett**  
*Vice President*

**Chris Sinclair**  
*Treasurer*

**Charles Tyson**  
*Secretary*

**Marsha Anderson**

**Robin Baral**

**Casey Walsh Cady**

**Peter Hunter**

**Mary Kimball**

**Bob Marr**

**Chuck Moore**

**Carol Murphy**

**Chris Scheuring**

**Michele Clark**  
*Executive Director*

**Gina Nunes**  
*Development Associate*

**Kim Biasioli**  
*Stewardship Coordinator*

The Yolo Land Trust is a nonprofit corporation, founded in 1988 by an innovative group of farmers, ranchers, community leaders and conservationists dedicated to conserving Yolo County's land. The Yolo Land Trust has helped landowners place conservation easements on over 60 family farms throughout Yolo County, permanently conserving over 10,000 acres for future generations. These farms remain privately owned and operated. The Yolo Land Trust is conserving land today that will shape the character of Yolo County for centuries.



For more information on the Yolo Land Trust or to receive YLT E-News visit [www.yololandtrust.org](http://www.yololandtrust.org) or provide us with your email address on the enclosed remit envelope.

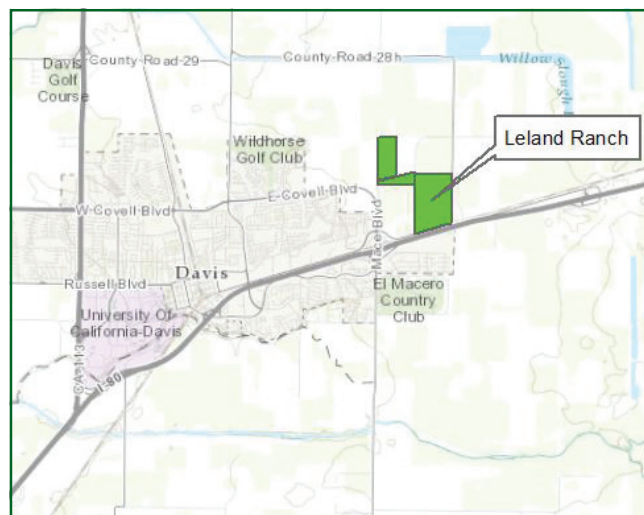
## WORKING FARM NEXT TO DAVIS IS CONSERVED FOREVER

Another Yolo County farm with significant agricultural value has been permanently set aside for agriculture. Thanks to the efforts of the Yolo Land Trust, the City of Davis, and the US Department of Agriculture - Natural Resources Conservation Service, Leland Ranch has been placed in an agricultural conservation easement that will keep the land in farming forever.

The 359-acre farm had been purchased by the City of Davis in 2011. The Yolo Land Trust secured a grant through the Farm and Ranch Lands Protection Program with the Natural Resources Conservation Service, which allowed the City to sell the farm to a conservation buyer at a reduced price.

As YLT and the City moved toward the completion of the project, some in the Davis business community asked the City to reconsider. They wanted the land to be developed for a technology business park. After multiple Council meetings, the Davis City Council voted unanimously to continue with the conservation easement project and the deal was recorded in March, 2014. The land will now permanently be operated as a working farm.

"Once again, Davis has partnered with the Yolo Land Trust and the US Natural Resources Conservation Service to preserve some of California's best farmland," said **Joe Krovoza**, Mayor of the City of Davis. "Permanently protecting the 359-acre Leland Ranch at the edge of town is a legacy that demonstrates the community's commitment to smart land



use policies and the protection of world class natural resources. We're proud to have worked with our partners to complete this important conservation project, adding to the growing legacy of protected farmland surrounding Davis."

Leland Ranch is now privately owned and on the local tax rolls. No further public investment will be required to keep the land in productive agriculture.

"NRCS has had a long partnership with the Yolo Land Trust preserving healthy and productive farms and the Leland Ranch is another great example of this commitment to protecting California's farming heritage," said **Carlos Suarez**, NRCS California state conservationist.

"We are delighted and honored to have worked with the City of Davis, NRCS and the buyers to conserve this farm," said **Michele Clark**, Executive Director of the Yolo Land Trust. "We especially appreciate the community support we received for the project. The location of Leland Ranch makes this a critical farm to keep in production."

## COMMUNITY SURVEY REVEALS STRONG SUPPORT FOR MISSION

Yolo Land Trust conducted a community survey over the summer and fall of 2013. A total of 143 responses were received from email and paper surveys and interviews with community leaders from throughout the County.

### The key results are:

- All community members agreed that permanent land protection was very or somewhat important.
- Reasons for why it is important to conserve land ranged widely with the most often cited reasons including food security, habitat and resource protection, mental health and quality of life, reduction of sprawl, and maintaining Yolo County's economy.
- Greatest threats to farmland conservation include lack of public awareness/interest, overpopulation/urban development and inefficient development patterns, reduction of Williamson Act funding.
- Respondents indicated that the area where it is most important to protect farmland is between the cities so they don't grow together.

### Value of Yolo Land Trust to the Community

The majority of respondents have a very positive or positive opinion of Yolo Land Trust and its activities. One respondent's comments summarizes what many others said: "Yolo County is home to some of the most productive lands in the world as we know it today. It makes no sense to not preserve it for the health and well-being of future generations." There was recognition that Yolo Land Trust is important to the community because it is the only nonprofit with the primary mission of protecting farmland and ranchland in Yolo County.

To review the final report in more detail, go to [yololandtrust.org/newsletters.php](http://yololandtrust.org/newsletters.php).

**We thank everyone who participated.**

## New Board Members and Staff

**Robin Baral** became a YLT director in fall, 2013. He started in sustainable agriculture as a teenager working on a rural mountain ranch in Washington, and helped develop a pilot organic gardening curriculum at Midland School in Los Olivos, California. He later obtained his undergraduate degree from UC Berkeley and a law degree from Loyola Law School, Los Angeles. Robin is an environmental and land use lawyer at Churchwell White LLP in Sacramento, where he represents cities, water districts and other public agencies throughout California.

**Kim Biasioli** is YLT's Stewardship Coordinator responsible for monitoring YLT's portfolio of conservation easements and documenting new conservation projects. She earned a B.S. in Ecology from the Evergreen State College in Olympia, Washington (2000) and an M.S. in Natural Resources from the University of Vermont (2007). She has worked as a field biologist for the National Park Service and the Nature Conservancy throughout the country. Kim also has experience with GIS, land conservation, restoration, and monitoring. She joined YLT in June, 2013.

**Casey Walsh Cady** joined the Board in the fall, 2013. Casey holds a B.S. in Agricultural and Resource Economics from the University of Massachusetts-Amherst (1984) and an M.S. in International Agricultural Development from University of California-Davis (1990). Casey has spent the bulk of her career at the California Department of Food and Agriculture where she works on environmental issues and sustainable agriculture including water policy, dairy water quality and energy production issues. She currently is the President of the California Small Farm Conference and sits on many advisory committees.



# A DAY IN THE COUNTRY

2014  
OLD SUGAR MILL



A Day in the Country will be held this year in Clarksburg at the Old Sugar Mill.

**Sunday, September 7  
from 3:00 p.m. to 6:00 p.m.**

**Don't forget to  
MARK YOUR  
CALENDARS.**

A Day in the Country features tastings from local wineries and chefs who create special dishes featuring food grown on Yolo County's farmland.

Visit  
[www.yololandtrust.org](http://www.yololandtrust.org)  
for more information.

## A DAY IN THE COUNTRY 2013 SNAPSHOTS





221 W. Court Street, Suite 5  
Woodland, CA 95695

NONPROFIT ORG  
US POSTAGE PAID  
WOODLAND CA  
PERMIT NO. 137

**BIG**  
DAY OF  
GIVING →  
MAY 6

**24 HOURS**  
TO GIVE  
WHERE YOUR  
HEART IS

**GiveLocalNow is gearing up  
for the first BIG Day of Giving  
benefiting the region's nonprofits  
with a 24-hour giving challenge.**

### **Why give to Yolo Land Trust?**

By preserving land we help keep farmers farming and ranchers ranching. This enhances the opportunity to “buy fresh, buy local” and enjoy a small-town, rural atmosphere.

### **How can you give?**

On May 6th, starting at 12:00 AM midnight for 24 hours until 11:59 PM, visit [givelocalnow.org](http://givelocalnow.org) and donate to Yolo Land Trust through this website.

### **How else can I help?**

Use your social media networks and share your love for Yolo Land Trust and ask others to make a donation to us. Help us raise philanthropy and support Yolo Land Trust.

*AmazonSmile is a simple and automatic way for you to support Yolo Land Trust at no cost to you.*

Each time you shop at [smile.amazon.com](http://smile.amazon.com), Amazon will donate a portion of the purchase price to Yolo Land Trust. You'll find the same prices, selection and convenient shopping experience as Amazon.com, and your shopping will help Yolo Land Trust conserve farmland in Yolo County.

To shop at AmazonSmile simply go to [smile.amazon.com](http://smile.amazon.com) from the web browser on your computer or mobile device. No need to create a new account, simply use your current account through AmazonSmile and all your settings stay the same.

Go to <http://smile.amazon.com/ch/68-0160105> and sign up today to support Yolo Land Trust. Thanks!

